



**Air & Sea Travel Center** Phone: (808) 951-9800

E-mail: [info@airseatvl.com](mailto:info@airseatvl.com)

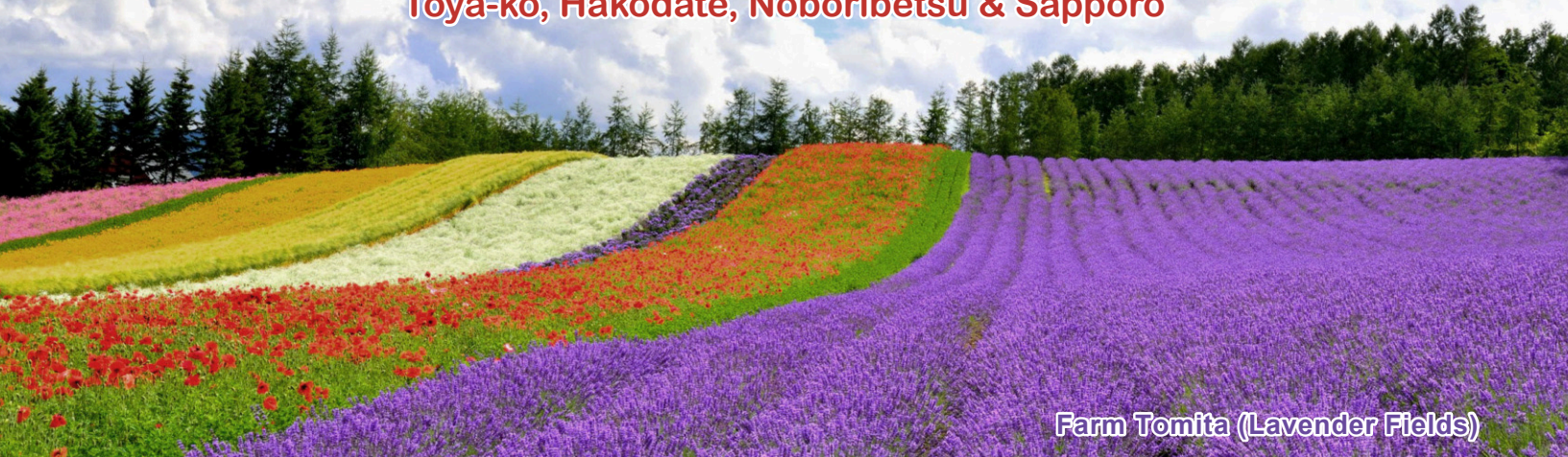
[www.airseatvl.com](http://www.airseatvl.com)

50 S. Beretania Street, Suite C - 211B, Honolulu, HI 96813

# Hokkaido Lavender Tour in Summer

~ A break to the Aromatic Purple Haze Field ~

Cities covered: Chitose, Furano, Biei, Asahikawa, Otaru  
Toya-ko, Hakodate, Noboribetsu & Sapporo



Farm Tomita (Lavender Fields)

Traveling Dates:  
June 27 – July 7, 2026 (11 Days)

Price per person: **\$ 4,488**  
Incl. Tax & Fuel Surcharge Single Supp: \$ 950

## Tour Package Includes:

- \* International Flight from Honolulu by
- \* Furano Lavender Festival
- \* **20** Meals and Admissions as Stated
- \* Natural Hot Spring Ryokan (**4** Nights)
- \* Special Meals Included:
  - Crab Feast • Salmon Chan Chan Yaki
  - Lucky Pierrot Hakodate Burger • Onsen Kaiseki
- \* Lavender Flavored Ice Cream, Hokkaido Honeydews  
Beer & Sake Tasting
- \* Lake Toya Fireworks Show
- \* Mt. Hakodate Ropeway
- \* Hand-on Activity – Music Box DIY
- \* Squid Fishing & Tasting in Hakodate's Morning Market
- \* Gratuity for Local Tour Guides & Drivers



JAPAN AIRLINES

**FREE**  
Use of  
Wireless  
Tour Guide System



Otaru Music Box Museum



Hakodate Ropeway

**Day 1\*\*Jun 27****Honolulu → Chitose**

We begin our journey by boarding an international flight to **Hokkaido** via Haneda, Japan's second largest island and the largest and northernmost prefecture. Meals and snacks will be served on the plane.

**Day 2\*\*Jun 28****Chitose — Sapporo**

After arriving at the New Chitose International Airport in Sapporo, we will meet with an Air and Sea Travel representative who will escort us to our hotel.

**Day 3\*\*Jun 29****Sapporo — Furano — Biei — Asahikawa****( B, L, D )**

In the morning, we will visit the beautiful **Farm Tomita**, where Lavender Fields with the Tokachi mountain range as a backdrop displays the most spectacular view in the region. Here we can taste the unique **Lavender Flavored Ice Cream**. Furano is synonymous with great food and local hospitality. Any visit to the area is not complete without sampling some of the mouth-watering cuisine served in the local restaurants. A **Lunch Buffet** including **Locally Grown Honeydews** will be served. Later we will stop at the Biei Hills, a place that attracts as many as 1.2 million visitors every year because of its astonishing views of flowers. **Shikisai-no-Oka** (Hill of Four Seasons) provides a panoramic view of flower blossoms and a natural heavenly fragrance across seven hectares of land on the Biei Hills. We will visit **Shirogane Blue Pond**, a man-made pond in the town of Biei. The color is from the colloidal aluminum hydroxide in the water. Then we will check into our hotel in Asahikawa.

**Day 4\*\*Jun 30****Asahikawa****( B, L )**

After breakfast, we will transfer to **Asahiyama Zoo**, home to 700 animals representing 124 different species. It is the first facility in Japan to successfully breed in captivity, animals that live in cold regions, such as polar bears, Amur leopards, and Scops owls. Then, we will stop at the **Otokoyama Sake Brewery & Museum**. Otokoyama is a well-known sake brand both within Japan and worldwide. The museum comprehensively covers the rich sake brewing heritage, as well as the ancient sake-related literature and art. Enjoy **Sake Tasting** and the special gift shop. **Asahikawa Station** is the central train station for Asahikawa, the second largest city in Hokkaido by population after Sapporo. We will enjoy the rest of the day on our browsing or shopping in the station or shopping street.

**Day 5\*\*Jul 1****Asahikawa — Otaru ㊦****( B, D )**

Today, we will transfer to **Otaru**, a small harbor city which served as a major trade and fishing port from the late 1800s. Many old warehouses and former office buildings give the city center a special character reminiscent of past decades and make the **Otaru Canal** a place for a pleasant stroll. During the day, artists display their works to passing tourists. During the evenings, old fashioned gas lamps are lit and provide a romantic atmosphere. Upon arrival, we will visit **Otaru Kihinkan (The Old Aoyama Villa)**, with a history of 100 years, it has been designated as one of the national cultural properties. See the Aoyama Villa, which took the third generation of the Aoyama family six years to build. The detailed construction methods and ingenious design of the Aoyama Villa show the glory of the Meiji period. The museum also houses a collection of various works of art, providing an in-depth understanding of the lifestyle and contemporary culture of the Meiji period. Otaru is well known for its handmade beautiful and intricate music boxes, so we will stop at the **Otaru Music Box Museum** to learn about this special local product. The museum is located in a beautiful century-old red brick building, designated as one of the historic landmarks of Otaru City. Music boxes in various sizes and types are neatly displayed. We will also have a chance to **make our own Music Box**. Later in the afternoon, we will visit the **Kitaichi Glass Company**. There are three different sales floors: "Western," "Japanese," and "Country." We will also enjoy a **cup of coffee** at the elegant café, "Kitaichi Hall," and get to keep the special cup as a gift. Tonight, we will check in to our hotel in Otaru.

**Day 6\*\*Jul 2****Otaru — Toya-ko ㊦****( B, L, D )**

After breakfast, we will drive to our onsen resort, Toya-ko. The Toya-ko region features an active volcano and the **Hot Springs** is available to us any time at our resort. On the way, we will visit **Upopoy National Ainu Museum and Park**, a museum where traditional Ainu culture and lifestyle is shown in an outdoor reproduction of a small Ainu village. After lunch, we will transfer to Showa Shinzan which is one of Japan's youngest mountains. We will visit the **Showa-Shinzan Bear Park** where we can get up close to the bears and feed them. Tonight, we will arrive **Lake Toya (Toya-ko)**, the third largest lake in Japan and ice-free throughout the year. After dinner, we will view the spectacular **Fireworks** from the lake (weather permitting).

**Day 7\*\* Jul 3****Toya-ko — Hakodate** ㊦**( B, L, D )**

After breakfast, we will go to **Hakodate**, the 3rd largest city of Southern Hokkaido. After lunch, we will arrive at Hakodate. **Fort Goryokaku** is a massive, star-shaped, Western-style citadel, which was built in the last years of the Edo Period for the defense of Hakodate against the imperialist threat posed by the Western powers. A few years later, the fort became the site of a civil war between an army of the shogunate and the superior troops of the newly established Meiji government. After the fort lost its military importance, it was eventually turned into a public park in the 1910's. Then we will head to **Mt. Hakodate** (Hakodate-yama), a 334 meter high, wooded mountain with a 9 kilometer circumference at the southern end of the peninsula. Because of its location, Mt. Hakodate is considered one of the spots where we have the most beautiful view in the world. We will take the **Ropeway** to the top of the mountain to enjoy the glittering city view. For dinner, we will have a hearty **Buffet at the Onsen Resort**. Later we can relax and rejuvenate at a traditional outdoor **Hot Spring** in Yunokawa.

**Day 8\*\* Jul 4****Hakodate — Noboribetsu** ㊦**( B, L, D )**

Today we will visit Hakodate's famous **Morning Market** which opens daily from 5am to noon. The market has more than 360 tightly-packed stalls offering a variety of fresh seafood and produce. Our tour will include activities such as **Fishing Squid and Tasting**. We will also have the chance to see the "Dancing Tako." After that, we will stop is the Hakodate History Plaza. In 1804, it was just a small harbor with several warehouses, but it became the famous **Kanemori Red Brick Warehouse** by 1909. There are hundreds of small shops located in or near the warehouse. We will find many local arts and crafts, as well as hand-made merchandise from all over the world. Want to try a Japan Local Burger? We will have **Burger at LUCKY PIERROT: Hakodate's No. 1 Burger Chain** for our lunch. Lucky Pierrot was established in 1987. The chain has 17 branches that have different themes and storefronts but they all have the same mission: sharing the joy with their customers. After lunch, we will stop at the **Jigokudani** or "**Hell Valley**", a main source of Noboribetsu's hot spring waters. It is a spectacular valley just above the town of Noboribetsu Onsen with displays of hot steam vents, sulfurous streams and other volcanic activity. For dinner, we will have a hearty **Buffet at the Onsen Resort**. Later we will have a relaxing time at the **Noboribetsu Onsen**, Hokkaido's most famous hot spring resort. It offers as many as eleven different kinds of thermal waters that are considered among Japan's best and most effective.

**Day 9\*\* Jul 5****Noboribetsu — Sapporo****( B, D )**

Today, we will visit **Noboribetsu Date Jidai Village**. Noboribetsu Date Jidaimura is a history theme park that is centered on the Edo Period when the Tokugawa Shogunate was in power for more than 250 years. The theme park is made of reconstructed buildings from the Edo Period. This allows us to experience the lifestyle of the period just by walking the streets. This townscape, melding seamlessly into Hokkaido's grand natural scenery, is filled with samurai, ninja, oiran, and townspeople, and serves as a backdrop to fierce action shows, as well as elegant performances, making it home to truly breathtaking entertainment. And we can enjoy our lunch in the park. After that, we will transfer to Sapporo. Upon arriving at Sapporo, we will have some fun in the largest shopping mall in Sapporo, the **Tanuki Koji Shopping Arcade**, whose history goes back 123 years. The unique aspect of this mall is that you will find traditional merchants selling kimonos, tea, or incense side-by-side with modern stores specializing in computer software or state-of-the-art electronics. A **Crab Feast** is arranged for our **Farewell Dinner**.

**Day 10\*\* Jul 6****Sapporo****( B )**

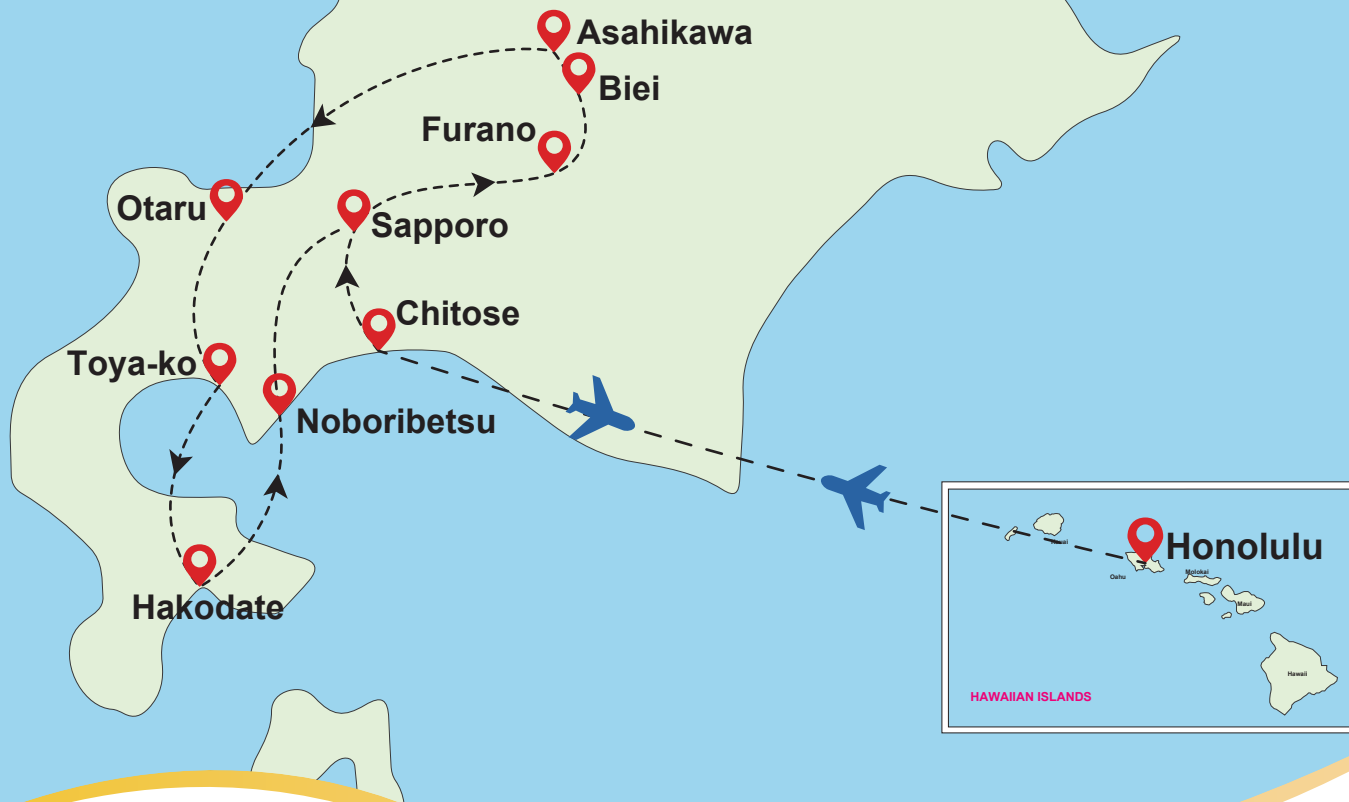
After breakfast, we can enjoy a free day to shop around the city and eat whatever looks interesting.

**Day 11\*\* Jul 7****Sapporo — Chitose → Honolulu****( B )**

After enjoying our breakfast, we will stop at the **Sapporo Beer Museum**, where we can taste locally-made beer. Then, we will stop at the **Hokkaido Shrine** constructed in 1870 in Sapporo as an interim building of the shrine for three deities of the Hokkaido reclamation. Next, we will stop at the Duty-Free Shop to find special souvenirs for our family and friends. After this stop, we will transfer to the New Chitose International Airport for our return flight to Honolulu via Haneda. This will end our trip to summer Hokkaido.

*We wish you a safe journey and many wonderful memories to share with family and friends!* ☺

**B: Breakfast | L: Lunch | D: Dinner**



### **Remarks:**

- ✦ Fares are per person; USD based on double occupancy and includes all airline taxes and fees.
- ✦ Escorted tour with a minimum of 20 passengers
- ✦ Refer to "General Condition of Air & Sea"
- ✦ We reserve the right to modify the itinerary to ensure smooth operation
- ✦ Gratuity for Tour Guides and Drivers is included
- ✦ Tour price is subject to change according to any airfare increase, increase in government taxes, additional fuel charges and fluctuation of the rate of exchange between U.S. and foreign currency
- ✦ Tour price includes fuel surcharge & government taxes and fees. The tour price shown is current at time of listing and pricing on Dec 1, 2025
- ✦ It is mandatory to inform Air and Sea Travel of any existing conditions that may require medical attention or accommodations during the trip. You need to provide this information in writing in the Tour Supplemental Information section of the application. If you do not have a travel companion who can help you with your special needs, you need to talk to your agent to determine if this is an appropriate tour for you. Some tours may be too strenuous depending on your condition. Air and Sea Travel reserves the right to reject or cancel your booking. You are responsible for any cancellation penalty that this may incur.
- ✦ All travelers, regardless of COVID-19 vaccination status, are welcome to travel with us and will no longer be required to provide proof of pre-departure testing, except for specific countries where COVID-19 vaccination, testing, or additional documentation are required by law. Please visit or revisit the government site to verify the travel requirements. Fully vaccinated are recommended. Vaccines combined with multi-layered preventative health and safety measures will help us provide a safe and healthy vacation environment.
- ✦ As government regulations evolve, our health and safety protocols will evolve as needed to ensure compliance. This may mean different protocols from state to state and city to city based on local requirements.

### **Payment Policy:**

**CHECK OR CASH PAYMENT ONLY.** A deposit of \$350 per person is required at the time of application. The balance is due on **Mar 20, 2026**. In case the balance of payment is not made within the required time, Air and Sea Travel Center reserves the right to cancel reservations and charge a cancellation fee.

### **Cancellation Policy:**

**Written notice is required for any cancellation. After Mar 20, 2026, the cancellation fee will be as follow:**

- \*\* **Mar 21 – May 13, 2026, 50%** of total price plus any other service fee caused by the cancellation;
- \*\* **From May 14, 2026 to the departure** or withdrawing during the tour shall be regarded as willingly giving up all rights concerned, **100%** of total price, and request for other services as a substitute shall not be accepted.

**\*\*We strongly recommend purchasing travel insurance when you make a reservation\*\***